

**Friday April 2nd 9a.m. to 12p.m. AND 1p.m. to 4p.m.**

**~12p.m. Awards~ ~12:30p.m. Lunch Break~**

**Register at: [ksswa.wildapricot.org](https://ksswa.wildapricot.org)**

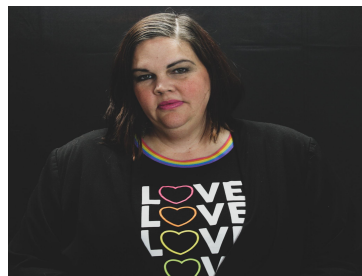
**Kansas School Social Workers Association PRESENTS:**

**Supporting and Engaging with LGBTQ+ Youth, Families,  
and Communities**



**Dr. Brianna McGeough, PhD, MSW**

Brianna is an Assistant Professor in the University of Kansas School of Social Welfare. Her research focuses on understanding and addressing mental health disparities experienced by members of the LGBTQ+ community, particularly disparities in depression and alcohol use disorder.



**Dr. Megan Pacey, PhD, MSW**

Megan is an Assistant Professor & Coordinator for Diversity, Equity, & Inclusion at the University of Kansas School of Social Welfare. She is a macro social worker with experience developing community-based programs and support for LGBTQ+ young people.

**2021 Spring Conference**  
Cost: **\$50** Non-members  
**FREE** for KSSWA members  
CEU's: **6.5 hrs available!**  
KSSWA Membership (1 yr): **\$40**

**Cultural Humility in the Schools: Helping  
School Social Workers Becoming Cultural  
Humility**



**Kadesha Adelakun, LCSW, RPT-S**

Licensed Clinical Social Worker (LCSW), in the state of Georgia (License # CSW004135) and a Registered Play Therapist-Supervisor (RPT-S # S2344). Kadesha has a Bachelor of Science Degree in Psychology from Morris Brown College and a Master of Social Work degree from the University of Georgia.